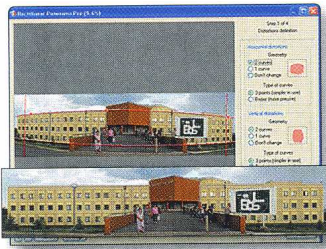


Rectilinear Panorama 1.2

Review by
Dave Singer

Photoshop plug-in to correct panorama distortion



PRICE:	\$179 (Professional Edition)
FOR:	Windows
FROM:	Altostorm Software
PHONE:	
WEB:	www.altostorm.com
RATING:	◆◆◆◆◇

When you hear the word panorama used to describe a Photoshop-compatible plug-in, you tend to think of stitching applications that are used to assemble multiple images into one larger image. Rectilinear Panorama 1.2 by Altostorm Software is different. It's not used to create panoramas but to correct for distortions found in panoramic and other wide-angle images. Rectilinear Panorama can correct many problems normally associated with panoramic and wide-angle images including barreling; pin-cushioning; distortions caused by camera tilt, angle, or rotation; and more.

Using a wizard-driven inter-

face, Rectilinear Panorama 1.2 makes correcting such distortions quick and easy. After importing your image, you're presented with a four-step process. First, you need to define the distortion in your image by selecting from the options provided on the right side of the Rectilinear Panorama interface. Then instruct the software as to whether you want to just straighten your image or also correct for curvature. Once this step is done, you can make manual adjustments to your image, such as increasing or decreasing horizontal and vertical adjustments to make your final image appear more natural. The final step is to apply your

crop, if any, to the image. Rectilinear Panorama doesn't make any changes to your actual file until all of the steps in the wizard have been completed.

With a clean, well-laid-out interface and simple, intuitive controls, Rectilinear Panorama 1.2 will make a great addition to your digital darkroom toolbox.

Rectilinear Panorama 1.2 comes in two editions: home and professional. Both support 8-bit images and RGB and grayscale color spaces. The professional edition, which we reviewed, adds support for 16-bit images, CMYK, and Lab color spaces and includes a commercial license. •